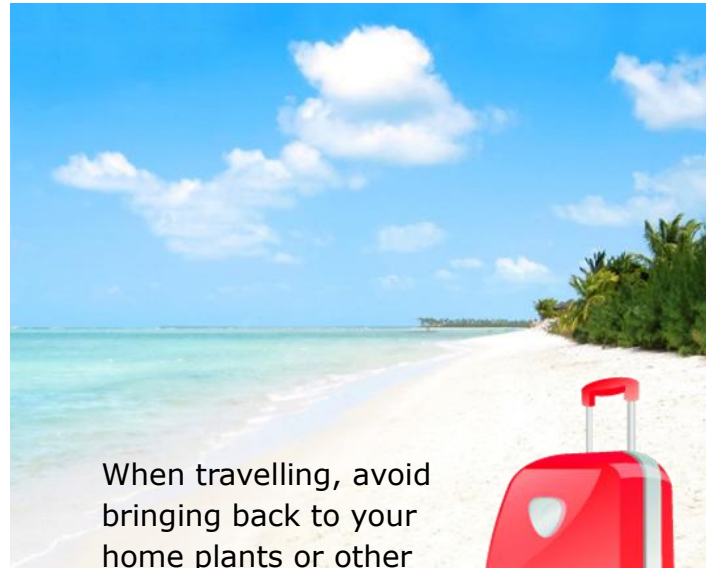


## How you can help

- Never ever illegally bring home plants, seeds, flowers, fruit and vegetables.
- If you do wish to import plants into your country, contact your local Plant Health authorities to find out what you can do legally.
- If you are carrying any plants, seeds, flowers, fruit and vegetables, declare them to the Customs official.



When travelling, avoid bringing back to your home plants or other plant items ... because plant pests or diseases may be hiding on them.



This leaflet was prepared by:

[your NPPO]

In collaboration with the European and Mediterranean Plant Protection Organization (OEPP/EPP0 - [www.eppo.int](http://www.eppo.int))



**DON'T RISK IT!**

**Pests and diseases can hide on plants. Please do not bring home plants, seeds, fruit, vegetables or flowers.**

This poster was prepared by the European and Mediterranean Plant Protection Organization (OEPP/EPP0 - [www.eppo.int](http://www.eppo.int)) in collaboration with Dr David Stewson (Paris, GB) - Design Annette Roy (FR)

**Help us to protect our crops and beautiful countryside against plant pests and diseases**

## Plants can get sick too!

Just like humans and animals, plants can get sick too. They can suffer from diseases caused by viruses, bacteria, fungi and be attacked by pests, big and small, such as insects, mites or nematodes. Recently, we have seen an increase in the number of new pests and diseases being introduced into areas which were previously free of them. Many of these recent introductions can be related to the rapidly increasing levels of international trade and travel.

### Introduction of new plant pests and diseases can threaten both the economy and biodiversity

Pests and diseases can hitch a ride on plants, seeds, flowers, fruit and vegetables, even if they look healthy, and on soil clinging to roots. In this way, when we move plants between different parts of the world, we can inadvertently introduce new pests and diseases into our countries. Once introduced into a new environment, some of these alien pests and diseases can cause severe economic losses to agriculture and forestry, and threaten biodiversity. In the past, this phenomenon was exemplified with the introduction into the Euro-Mediterranean region of potato late blight, grapevine phylloxera, Colorado beetle, and Dutch elm disease.

### National and international rules are in place

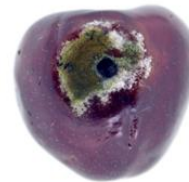
Plant health laws are in place to protect agriculture, forestry and the environment. Therefore, many plants and plant products (e.g. seeds, vegetables, cut flowers) are not allowed to be transported without official authorization. If you intend to transport plants, make sure that you are not infringing these laws by contacting your national plant health authorities beforehand.

## Some dangerous 'travellers'



Asian longhorned beetle (*Anoplophora glabripennis*): beautiful ... but it can kill our valuable trees.

Photos: M. Maspero, Centro MiRT Fondazione Minoprio, Como (IT)



Spotted-wing drosophila (*Drosophila suzukii*): tiny ... but it can eat our delicious cherries and other soft fruit.

Photos: M. Hauser and J. Davis, CDFA, Sacramento (US)



Bacterial canker of kiwifruit (*Pseudomonas syringae* pv. *actinidae*): invisible ... but it can destroy our kiwifruit orchards.

Photos: Plant Protection Service of Emilia-Romagna (IT)

## Protect plants

The objectives of this leaflet are to:

- Raise awareness among international travellers about the risks of moving plants;
- Encourage everyone to do their bit to stop the spread of new pests and diseases;
- Provide some background explanations to the 'Don't risk it' poster that is now being displayed in airports and seaports.



By refraining from transporting plants, seeds, fruit vegetables and flowers during your international travels, you help us to protect our crops and beautiful countryside against dangerous plants pests and diseases. You can also help by spreading this message to your family and friends.

